

**CERTIFIED LAND CORNER RECORDATION**

DESCRIPTION OF CORNER EVIDENCE FOUND, AND ORIGINAL RECORD (If known)

LOCATION No monument found at the corner (corner falls in paved approach to State Highway 217).  
 S.34 S.35  
 S. 3 S. 2 Corner position re-established from Wyoming Highway Department  
 T.14N., R.64W. R/W monuments as shown.  
 T.13N. G.L.O. record - Set Limestone 16 x 12 x 5 for corner to Sec.  
 6th P.M. 34, 35, 2 & 3.

DESCRIPTION OF MONUMENT AND ACCESSORIES ESTABLISHED TO PERPETUATE THE ORIGINAL LOCATION OF THIS CORNER:

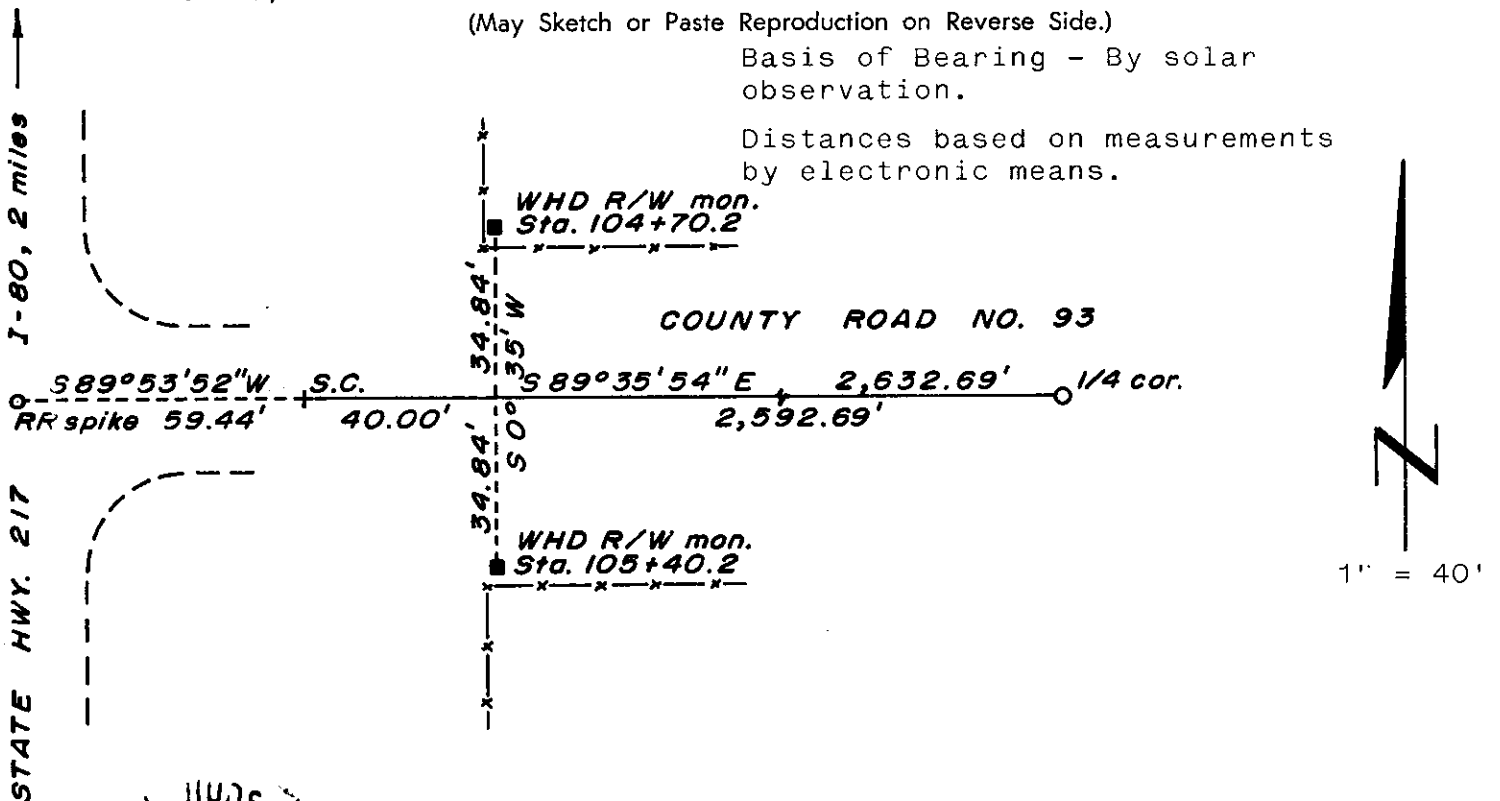
At the corner: No monument set.  
 Accessories: A railroad spike, origin unknown, bears S 89°53'52" W, 59.44 feet distant.  
 Wyoming Highway Department R/W monuments bear as shown in sketch.

SKETCH, WITH COURSE AND DISTANCE TO ADJACENT CORNER IF DETERMINED IN THIS SURVEY.

(May Sketch or Paste Reproduction on Reverse Side.)

Basis of Bearing - By solar observation.

Distances based on measurements by electronic means.



I, R. L. Hudson certify that I have carefully performed or reviewed the work done on the diagrammed corner as reported on this recordation form and approve the same.

R. L. Hudson Wyoming L.S. No. 519  
 Signature of Surveyor Registration No.

STATE OF WYOMING,  
 Office of Clerk and Recorder,  
 County of Taramie

This "corner record" was filed for record on the 18 day of July, 1977, was noted on the cross-index plat and is assigned page No. \_\_\_\_\_, in book No. \_\_\_\_\_.

Janet C Whitehead  
 County Official

Cross Index No.	T. _____	R. _____	Mer.
<u>217</u>	T. <u>14</u>	R. <u>64</u>	Mer.
<u>A17</u>	T. <u>13</u>	R. <u>64</u>	Mer.
_____	T. _____	R. _____	Mer.
_____	T. _____	R. _____	Mer.
_____	T. _____	R. _____	Mer.
_____	T. _____	R. _____	Mer.